

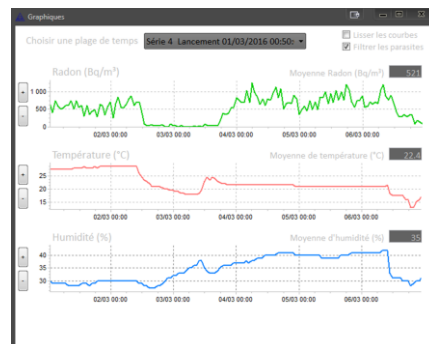


## Radon Monitor AER Plus and AER C

For a simple, fast and accurate measurement of radon gas in buildings.

Check yourself the quality of indoor atmospheres with **AER Plus** and **AER C**, real-time monitoring devices for the detection of radon\*, a well-known health hazard in buildings.

- ✓ **High sensitivity** radon measure
- ✓ **Simple to use**
- ✓ Real time data display, programmable measuring periods, from 15 mn to 4h
- ✓ Detection by photodiode, sensitivity 15 (Bq/m3) by (counts/hour)
- ✓ An emoticon indicates when the standard threshold determined by health authorities is exceeded or not
- ✓ Cumulative average over 24hrs, 1 month, or long term
- ✓ Data storage, download via USB
- ✓ Temperature and humidity measure
- ✓ 1 year battery lifespan (AER + : alkaline 1,5V / AER C : Lithium 3.6V)
- ✓ Dimensions : 10.5 cm x 3.6 cm x 8.6 cm (H x D x W)  
Weight : 315 g
- ✓ **AER C** : Data are transmitted automatically on the internet, via Sigfox IoT network (Internet of Things)
- ✓ **AER C** : Website for remote data browsing. Check out [aer.app.algade.fr](http://aer.app.algade.fr) for a live demo (user = demo, password = demo)
- ✓ Conditions of normal use for warranty : Humidity range 40% to 80%, and temperature range 0°C to 40°C



**Compliant with the requirements of International standard ISO 11665-5.**

### Also available in the AER range:

- **AER**: Simple and fast measurement of radon by homeowners or tenants
- **AER Pro** : Ventilation control output, based on radon activity concentration. On application.

### Find out more :

e-mail : [aer@algade.com](mailto:aer@algade.com)

Tel : +33 (0)5 55 60 50 00

Web: [www.algade.com](http://www.algade.com)

\* radon is a radioactive gas identified by the WHO since 1987 as a health hazard, potentially leading to lung cancer.

