

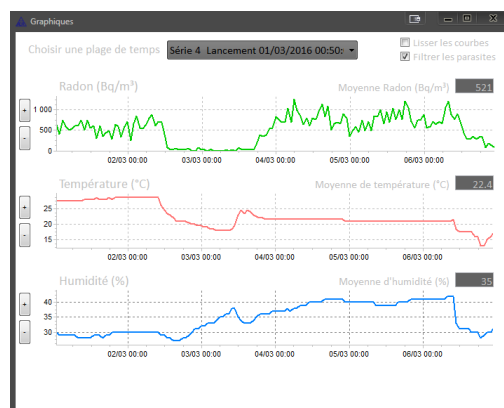


Radon Monitors AER²⁺ and AER²C

For a simple, fast and accurate measurement of Radon gas in buildings.

Check the quality of indoor atmospheres with **AER²⁺** and **AER²C (Connected)**, real-time monitoring devices for the detection of Radon (*), a well-known health hazard in buildings.

- ✓ **High sensitivity** Radon measurement
- ✓ **Simple** to use
- ✓ Real-time data display, adjustable measuring period from 15 min to 4h
- ✓ Detection by photodiode, typical sensitivity 20 (Bq/m³) per (counts/hour)
- ✓ An emoticon indicates whether the standard threshold determined by health authorities is exceeded or not
- ✓ Cumulative average over 24 hours, 1 month, or long term
- ✓ Data storage, download via USB
- ✓ Temperature, humidity and atmospheric pressure
- ✓ Air quality index (Integrated VOC sensor)
- ✓ Autonomy 1 month (Lithium-Ion battery, rechargeable via USB)
- ✓ Dimensions 14.4 x 9.2 x 5.1 cm, weight 310 g
- ✓ Conditions of normal use for warranty : Humidity range 40% to 80% and temperature range 0 to 40°C
- ✓ **AER²C** : Remote access via Sigfox or LoRa network (Internet of Things).
- ✓ **AER²C** : Web site for remote data browsing. Check out aer.app.algade.fr for a live demo (user = demo, password = demo)



Compliant with the requirements of International Standard ISO 11665-5

Also available in the AER² range :

- **AER²** : Simple and fast measurement of Radon by homeowners or tenants.
- **AER² Pro** : Ventilation control output based on Radon activity concentration. Contact us for more information.

Find out more :

E-mail : algade@algade.com

Tel : +33 (0)5 55 60 50 00

Web : www.algade.com

(*) Radon is a radioactive gas identified by the W.H.O. since 1987 as a health hazard, potentially leading to lung cancer.